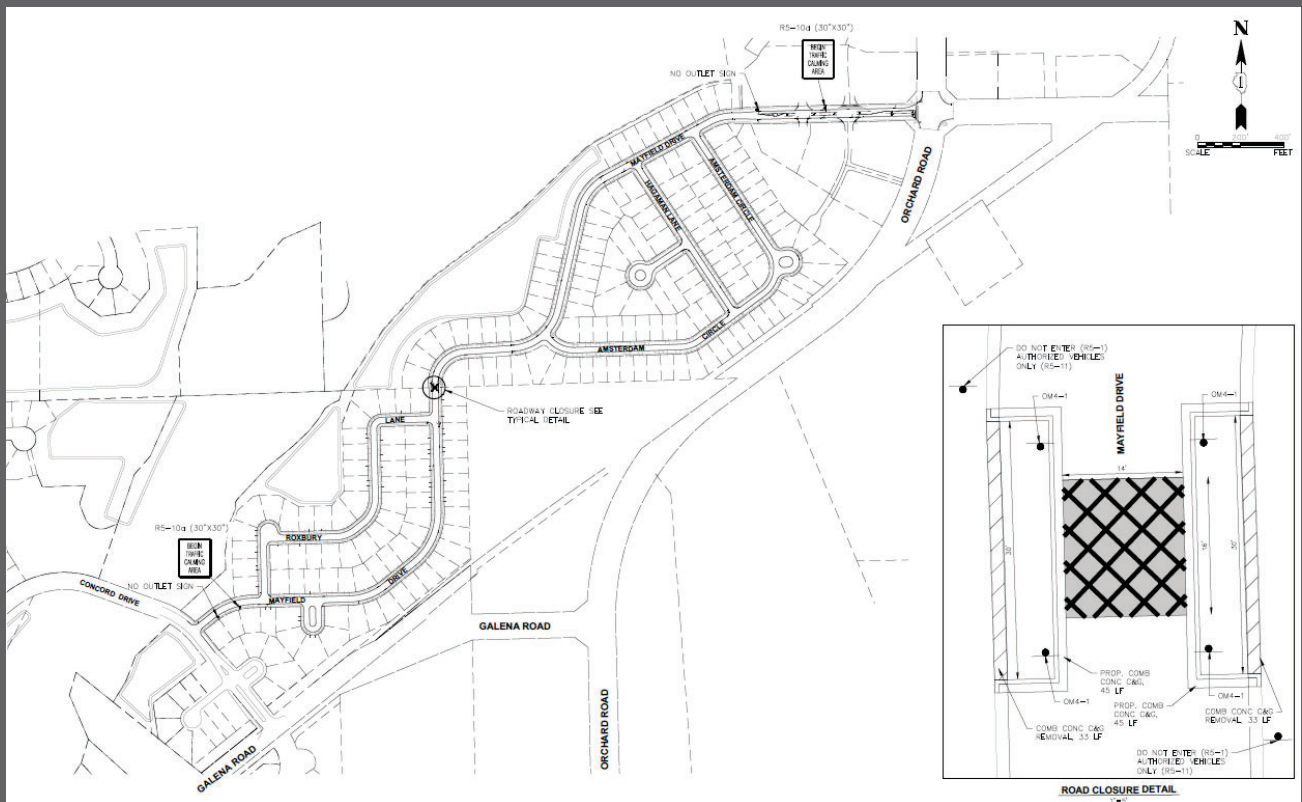
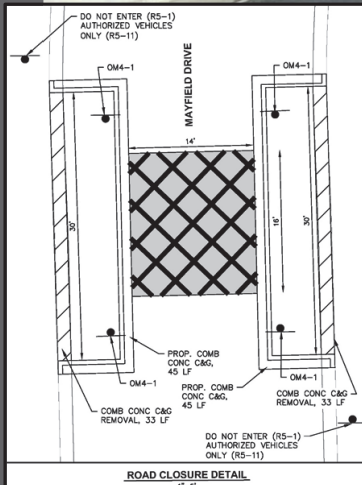


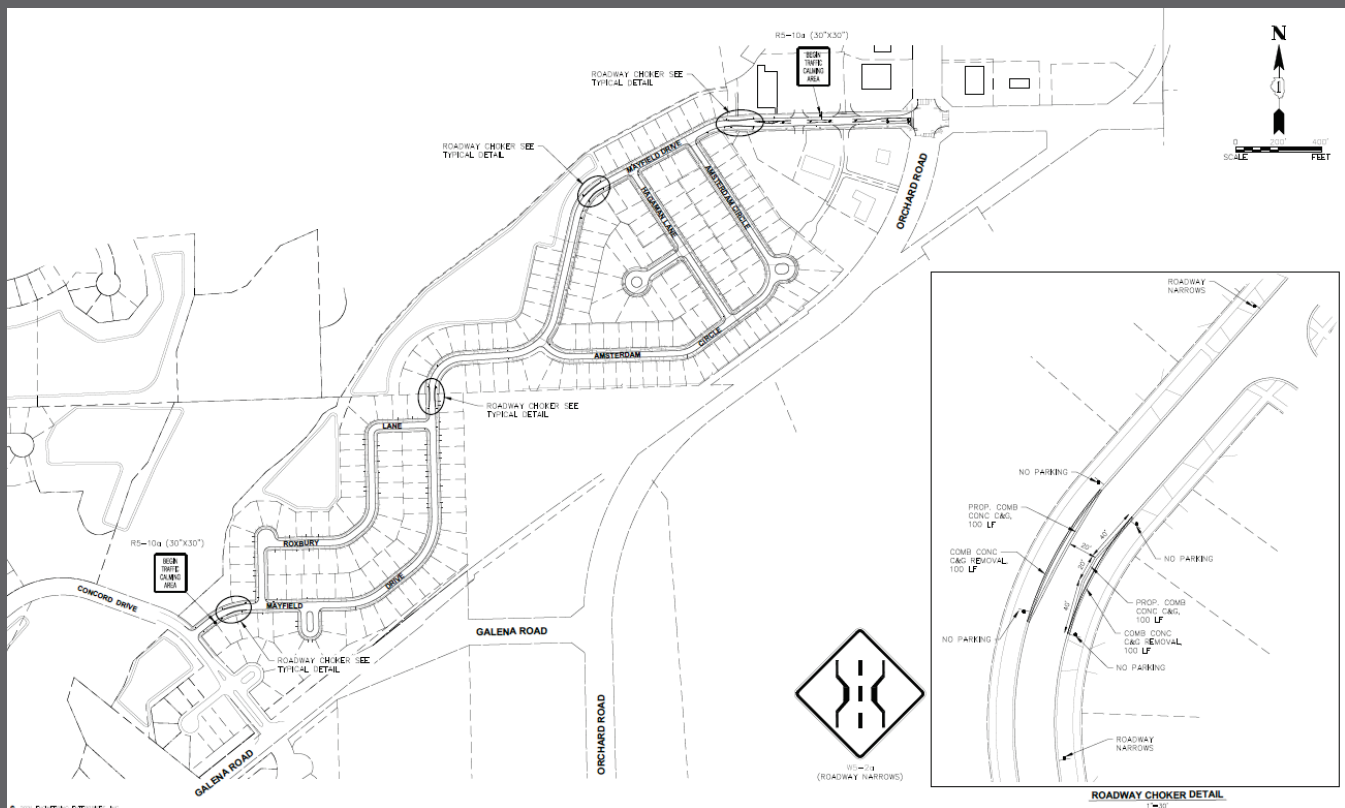
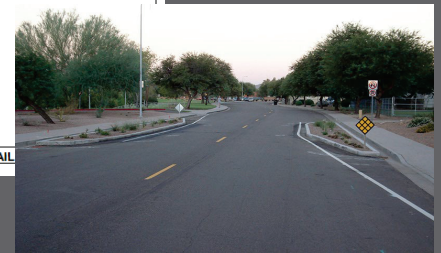
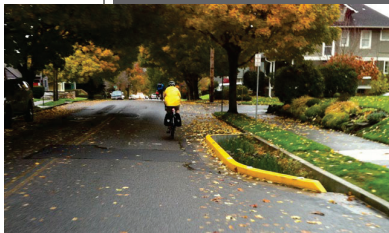
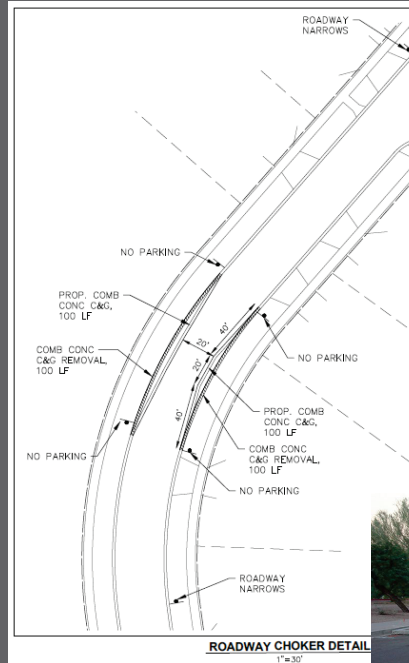
## OPTION 1 – ROAD CLOSURE

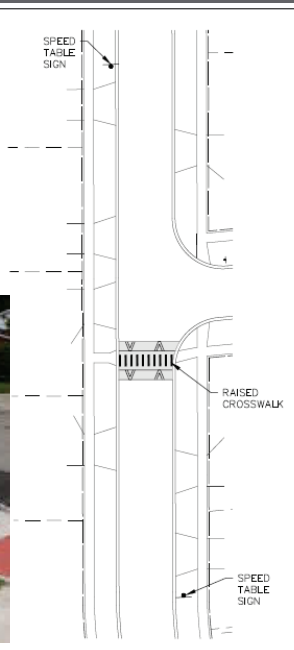
- Pros
  - Vehicle Volume Reduction
  - Allows authorized vehicles access
- Cons
  - Impact to surrounding residents
  - Low impact to vehicular speed
- Estimated Cost
  - \$16,940



## OPTION 2 – ROADWAY CHOKER

- Pros
  - Encourages lower speed at pinch point
  - No impact to emergency vehicle access
- Cons
  - Reduces on-street parking
  - Limited volume reduction impacts
- Estimated Cost
  - \$42,790

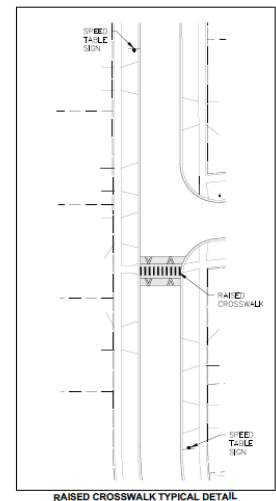
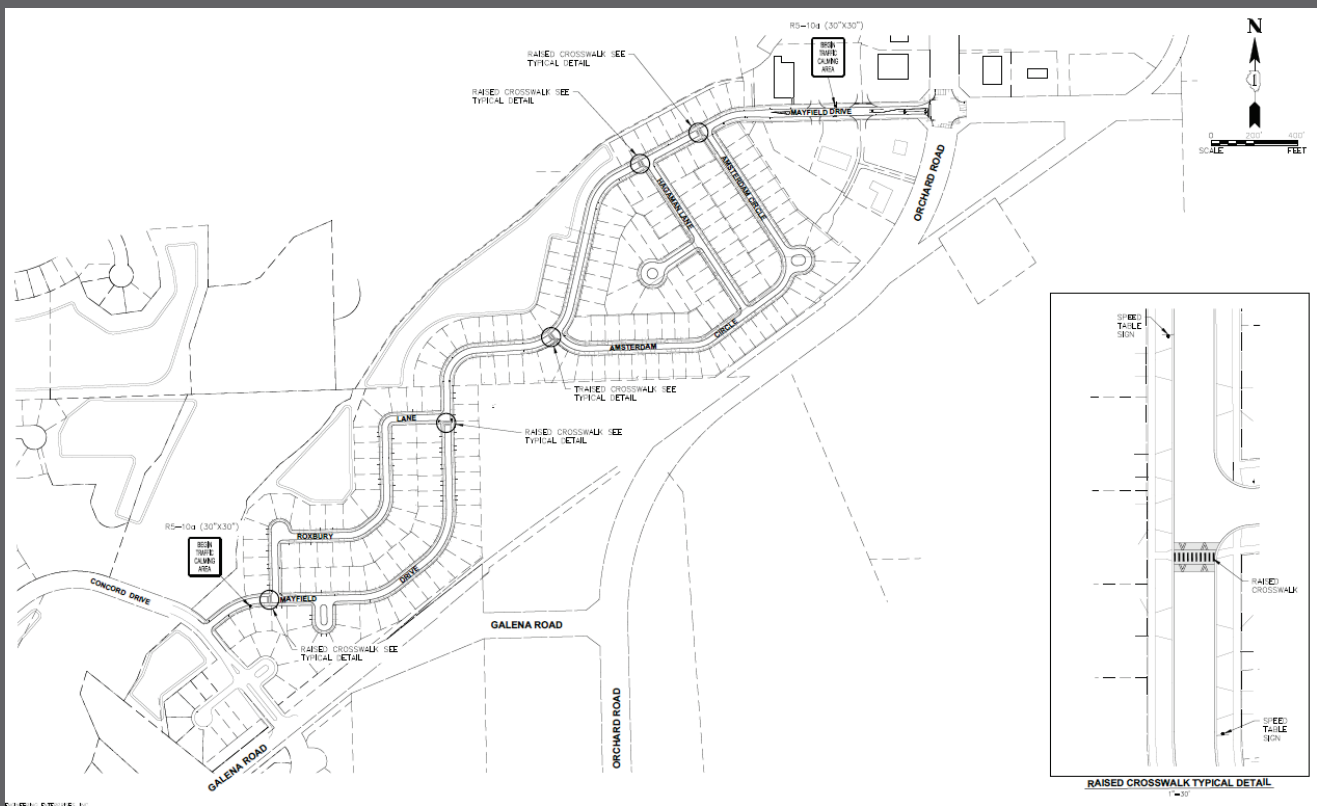




RAISED CROSSWALK TYPICAL DETAIL  
1"=30'

## OPTION 3 – RAISED CROSSWALKS

- Pros
  - Increased pedestrian safety
  - Reduction in speed at crosswalks
- Cons
  - Little data available on volume diversion
  - Impacts to snowplows and emergency vehicle access
  - Impacts to surrounding residents
- Estimated Cost
  - \$55,220



RAISED CROSSWALK TYPICAL DETAIL  
1"=30'





## OPTION 4 – NO IMPROVEMENTS

- Pros
  - No impact to surrounding residents
  - No additional cost
- Cons
  - No impact to volume reduction or vehicular speed



- Pros
  - Encourages lower speed at pinch point
  - Reduction in speed midblock
- Cons
  - Reduces on-street parking
  - Impacts to snowplows and emergency vehicle access
- Estimated Cost
  - \$38,100

