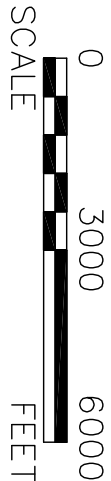
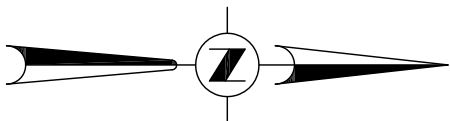
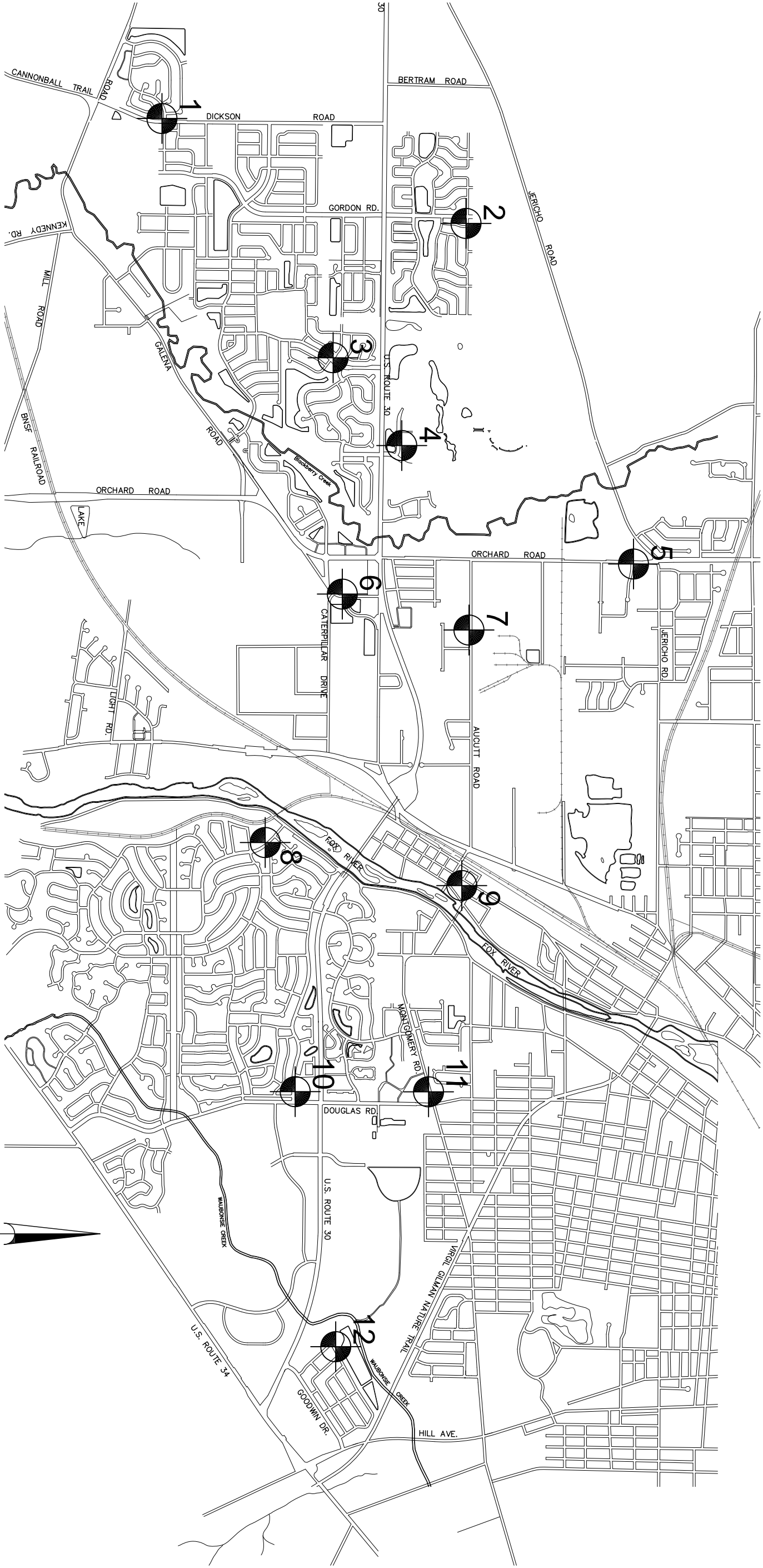


VILLAGE OF MONTGOMERY SURVEY CONTROL



Engineering Enterprises, Inc.
CONSULTING ENGINEERS
52 Wheeler Road
Sugar Grove, Illinois 60554
630.466.6700 / www.eeiweb.com

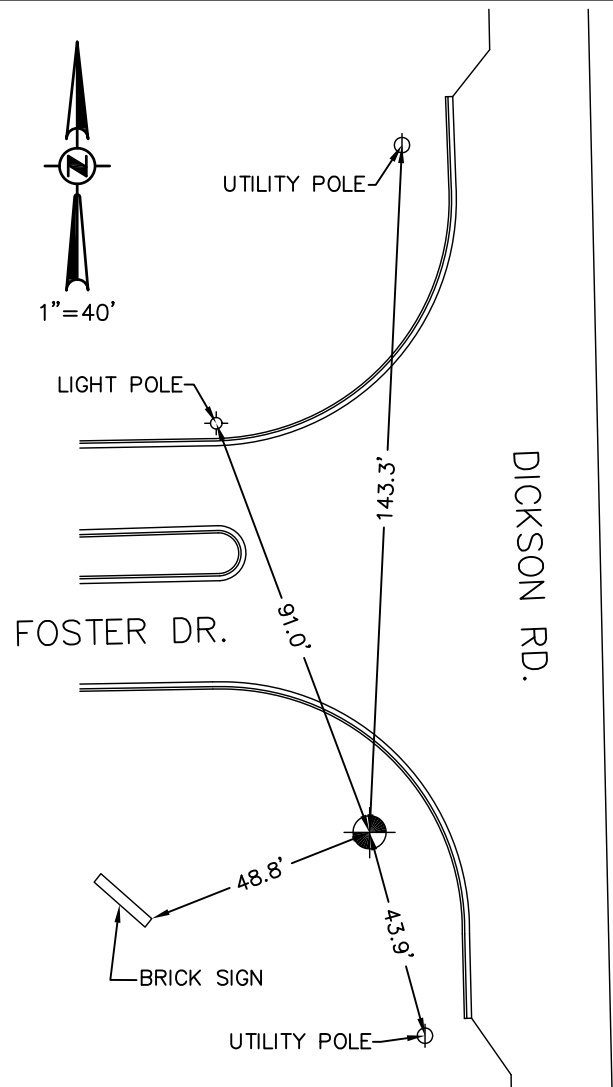
VILLAGE OF MONTGOMERY

SURVEY CONTROL

STATION NAME	1
NORTHING	1835066.686
EASTING	960713.330
ELEVATION (NAVD 88)	658.32

STATION DESCRIPTION: 3" ALUMINUM DISC SET IN CONCRETE AND STAMPED 'VILLAGE OF MONTGOMERY SURVEY CONTROL'

COORDINATES ARE ILLINOIS STATE PLANE, EAST ZONE, NAD83 (2011), GEOID 12A



Engineering Enterprises, Inc.
CONSULTING ENGINEERS
52 Wheeler Road
Sugar Grove, Illinois 60554
630.466.6700 / www.eeiweb.com

MAY 27, 2014

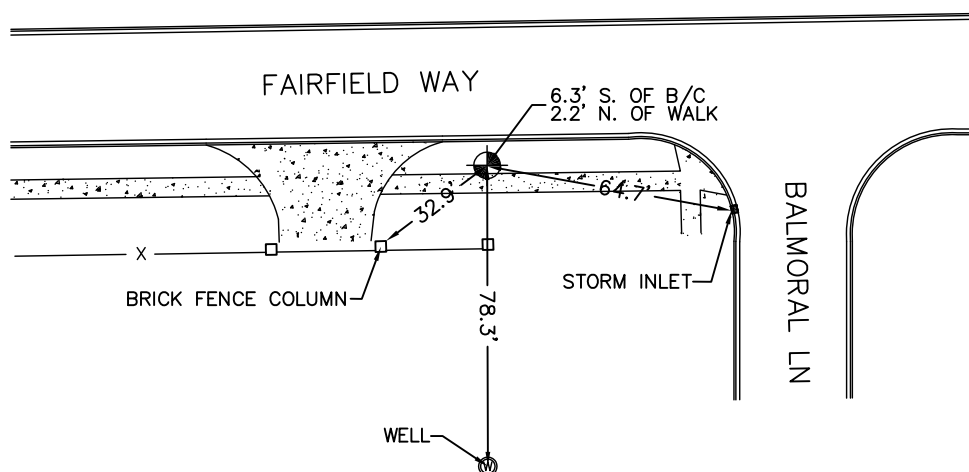
VILLAGE OF MONTGOMERY

SURVEY CONTROL

STATION NAME	2
NORTHING	1843837.878
EASTING	963347.900
ELEVATION (NAVD 88)	670.40

STATION DESCRIPTION: 3" ALUMINUM DISC SET IN CONCRETE AND STAMPED 'VILLAGE OF MONTGOMERY SURVEY CONTROL'

COORDINATES ARE ILLINOIS STATE PLANE, EAST ZONE, NAD83 (2011), GEOID 12A



Engineering Enterprises, Inc.
CONSULTING ENGINEERS
52 Wheeler Road
Sugar Grove, Illinois 60554
630.466.6700 / www.eeiweb.com

MAY 27, 2014

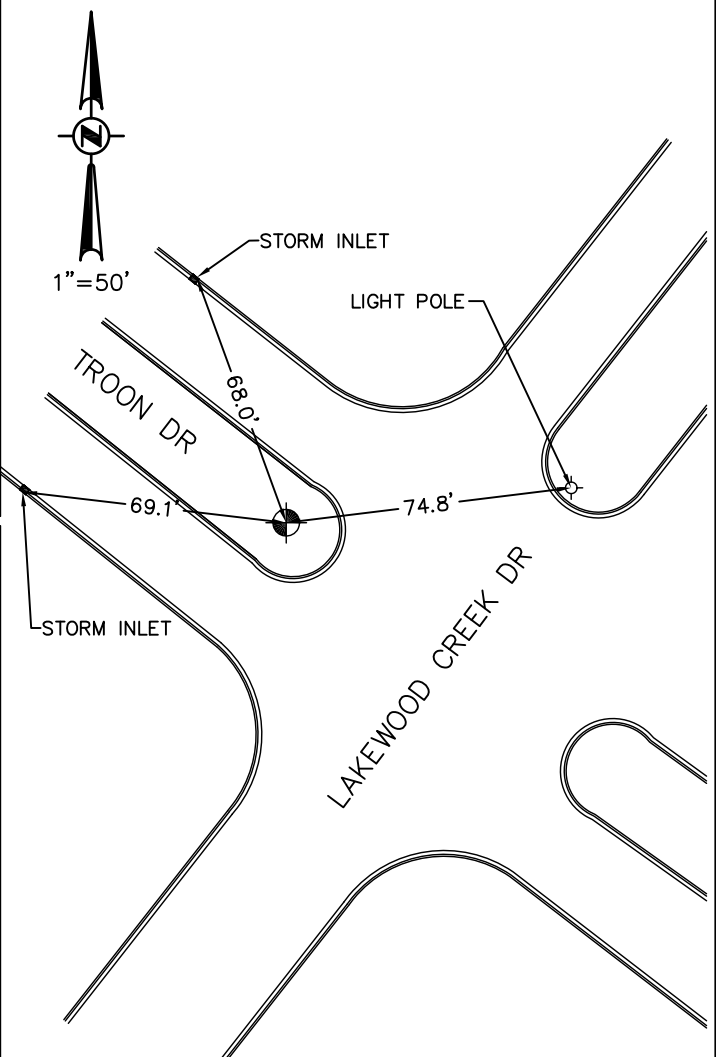
VILLAGE OF MONTGOMERY

SURVEY CONTROL

STATION NAME	3
NORTHING	1840007.337
EASTING	967238.056
ELEVATION (NAVD 88)	662.40

STATION DESCRIPTION: 3" ALUMINUM DISC SET IN CONCRETE AND STAMPED
'VILLAGE OF MONTGOMERY SURVEY CONTROL'

COORDINATES ARE ILLINOIS STATE PLANE, EAST ZONE, NAD83 (2011), GEOID 12A



40
YEARS

Engineering Enterprises, Inc.
CONSULTING ENGINEERS
52 Wheeler Road
Sugar Grove, Illinois 60554
630.466.6700 / www.eeiweb.com

MAY 27, 2014

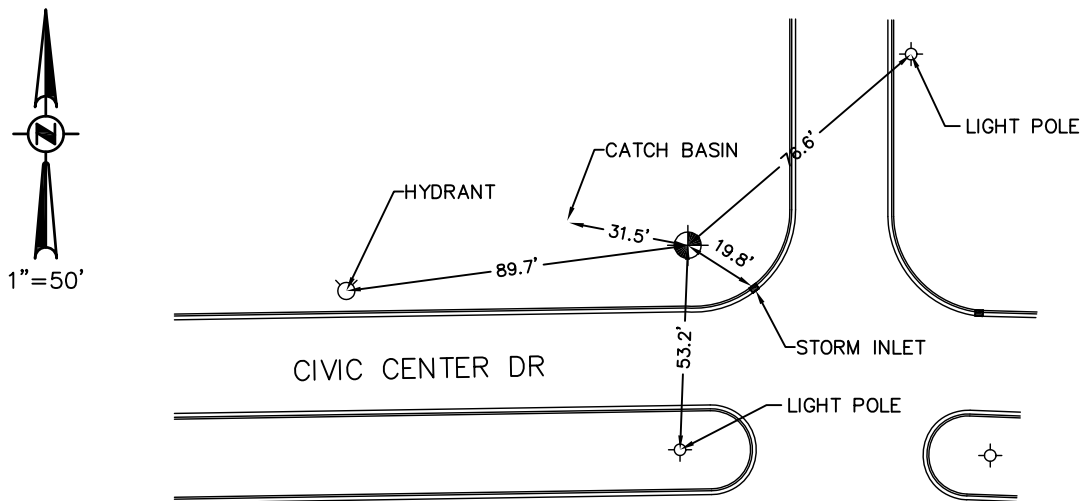
VILLAGE OF MONTGOMERY

SURVEY CONTROL

STATION NAME	4
NORTHING	1841992.923
EASTING	969696.047
ELEVATION (NAVD 88)	665.97

STATION DESCRIPTION: 3" ALUMINUM DISC SET IN CONCRETE AND STAMPED 'VILLAGE OF MONTGOMERY SURVEY CONTROL'

COORDINATES ARE ILLINOIS STATE PLANE, EAST ZONE, NAD83 (2011), GEOID 12A



Engineering Enterprises, Inc.
CONSULTING ENGINEERS
52 Wheeler Road
Sugar Grove, Illinois 60554
630.466.6700 / www.eeiweb.com

MAY 27, 2014

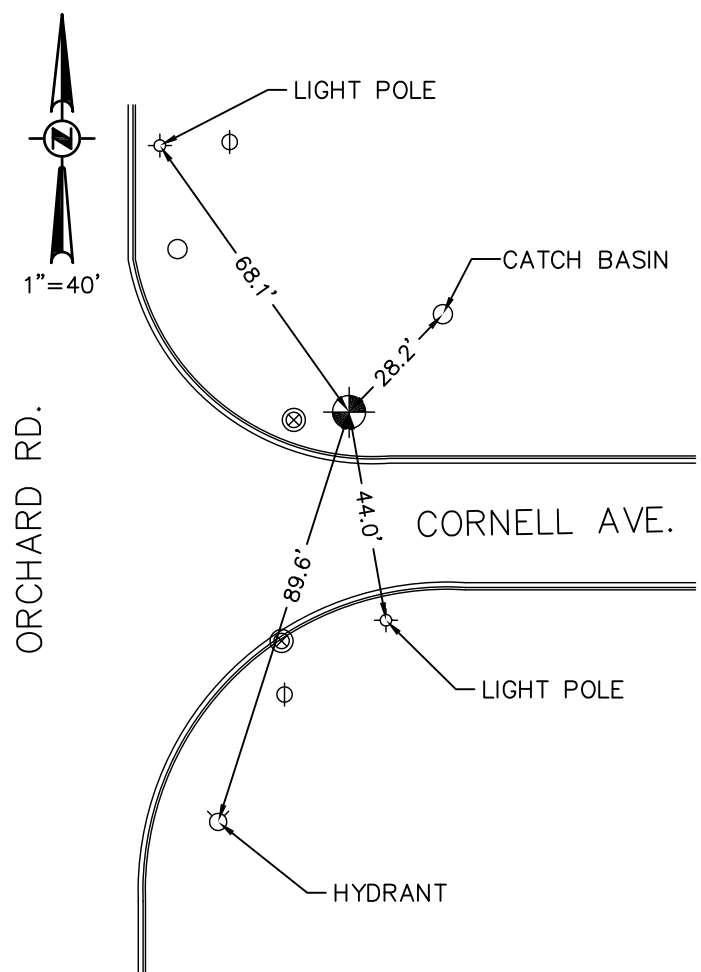
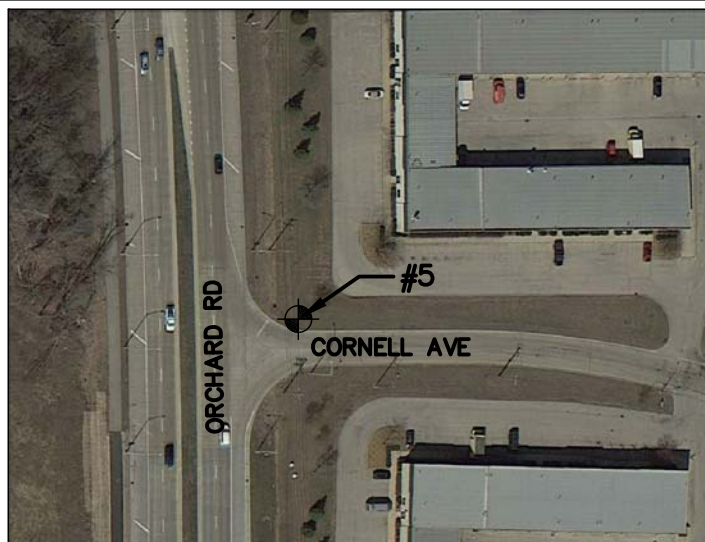
VILLAGE OF MONTGOMERY

SURVEY CONTROL

STATION NAME	5
NORTHING	1848787.662
EASTING	972828.407
ELEVATION (NAVD 88)	666.73

STATION DESCRIPTION: 3" ALUMINUM DISC SET IN CONCRETE AND STAMPED
'VILLAGE OF MONTGOMERY SURVEY CONTROL'

COORDINATES ARE ILLINOIS STATE PLANE, EAST ZONE, NAD83 (2011), GEOID 12A



Engineering Enterprises, Inc.
CONSULTING ENGINEERS
52 Wheeler Road
Sugar Grove, Illinois 60554
630.466.6700 / www.eeiweb.com

MAY 27, 2014

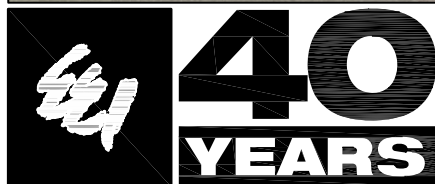
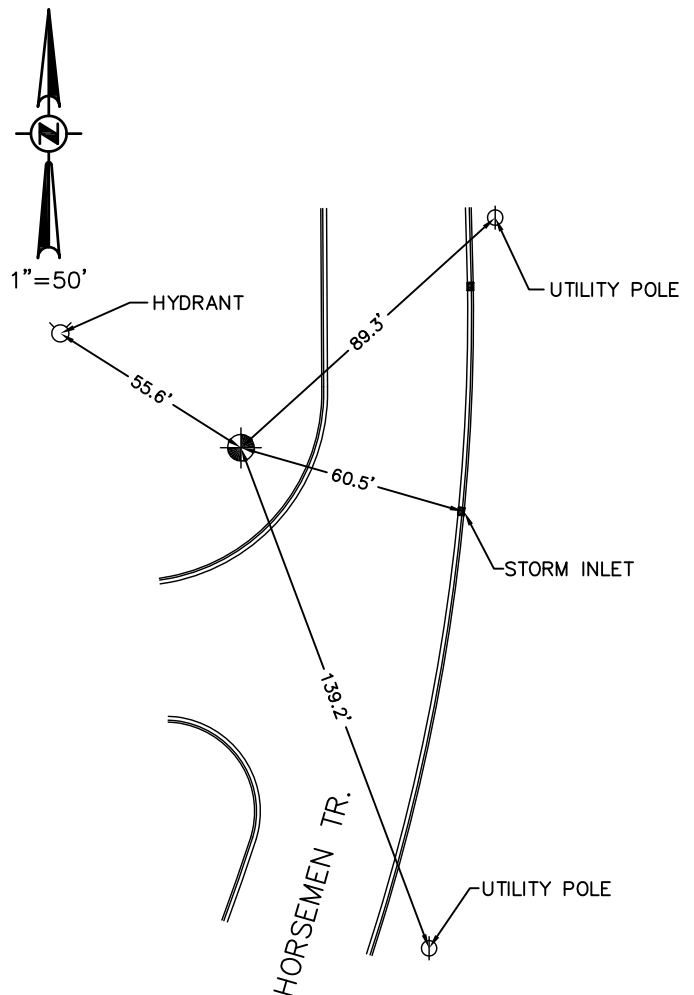
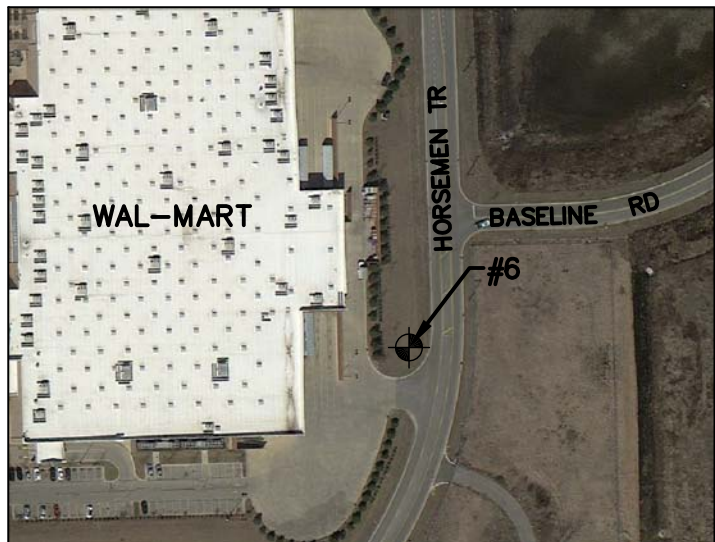
VILLAGE OF MONTGOMERY

SURVEY CONTROL

STATION NAME	6
NORTHING	1840487.284
EASTING	973876.814
ELEVATION (NAVD 88)	665.26

STATION DESCRIPTION: 3" ALUMINUM DISC SET IN CONCRETE AND STAMPED 'VILLAGE OF MONTGOMERY SURVEY CONTROL'

COORDINATES ARE ILLINOIS STATE PLANE, EAST ZONE, NAD83 (2011), GEOID 12A



Engineering Enterprises, Inc.
CONSULTING ENGINEERS
52 Wheeler Road
Sugar Grove, Illinois 60554
630.466.6700 / www.eeiweb.com

MAY 27, 2014

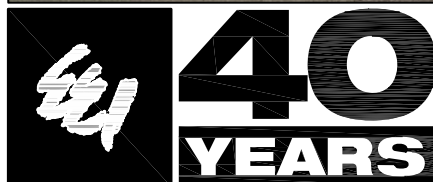
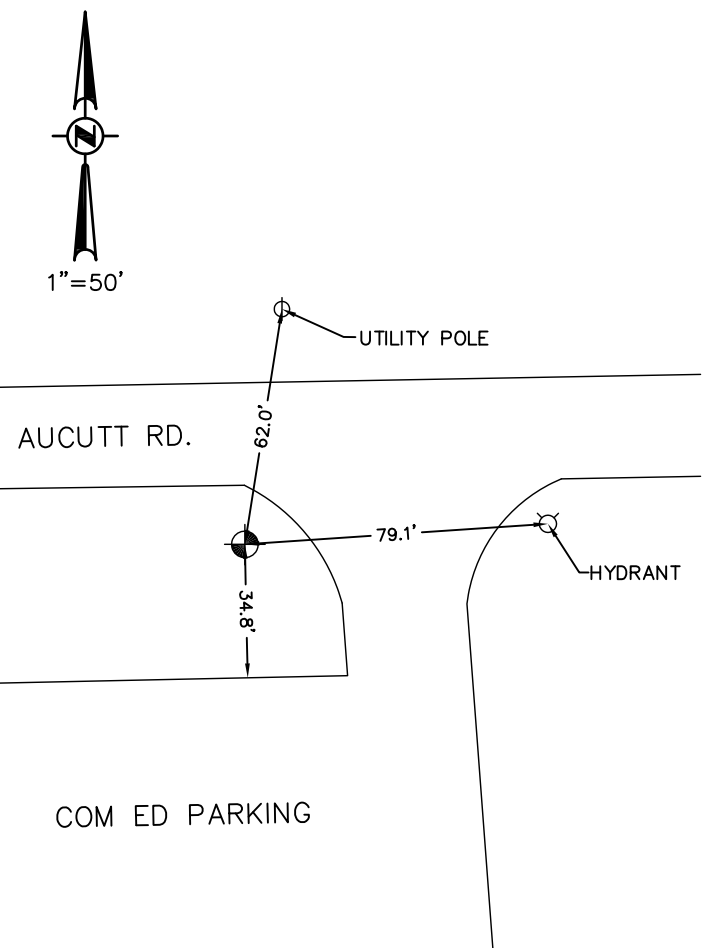
VILLAGE OF MONTGOMERY

SURVEY CONTROL

STATION NAME	7
NORTHING	1844220.054
EASTING	974803.334
ELEVATION (NAVD 88)	663.13

STATION DESCRIPTION: 3" ALUMINUM DISC SET IN CONCRETE AND STAMPED 'VILLAGE OF MONTGOMERY SURVEY CONTROL'

COORDINATES ARE ILLINOIS STATE PLANE, EAST ZONE, NAD83 (2011), GEOID 12A



Engineering Enterprises, Inc.
CONSULTING ENGINEERS
52 Wheeler Road
Sugar Grove, Illinois 60554
630.466.6700 / www.eeiweb.com

MAY 27, 2014

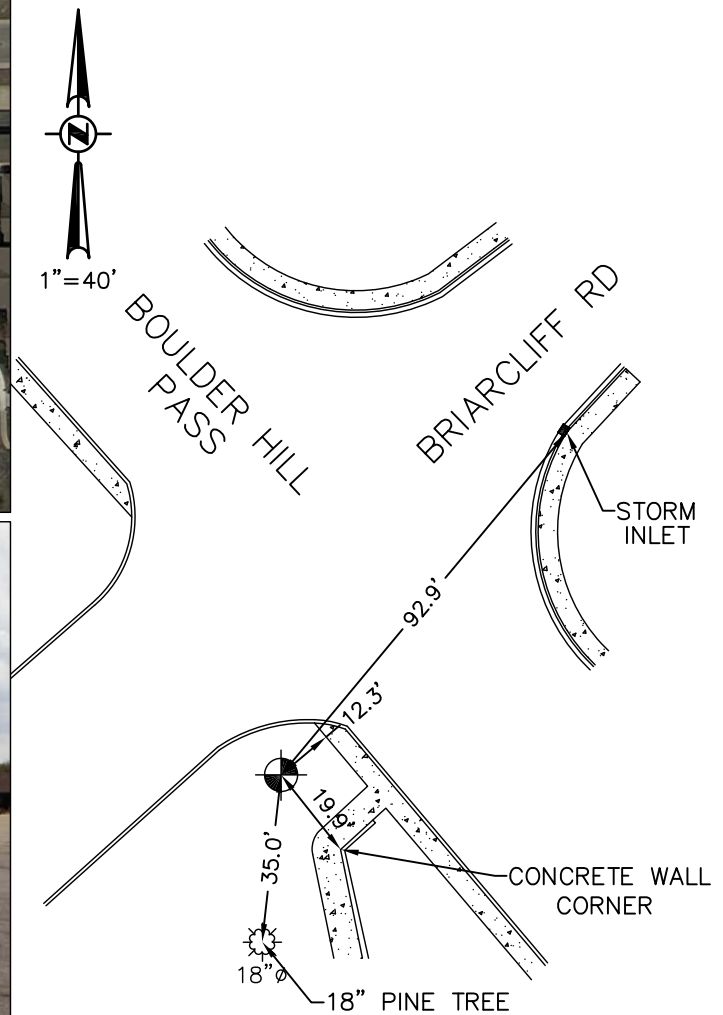
VILLAGE OF MONTGOMERY

SURVEY CONTROL

STATION NAME	8
NORTHING	1838598.666
EASTING	980783.400
ELEVATION (NAVD 88)	649.03

STATION DESCRIPTION: 3" ALUMINUM DISC SET IN CONCRETE AND STAMPED 'VILLAGE OF MONTGOMERY SURVEY CONTROL'

COORDINATES ARE ILLINOIS STATE PLANE, EAST ZONE, NAD83 (2011), GEOID 12A



40
YEARS

Engineering Enterprises, Inc.
CONSULTING ENGINEERS
52 Wheeler Road
Sugar Grove, Illinois 60554
630.466.6700 / www.eeiweb.com

MAY 27, 2014

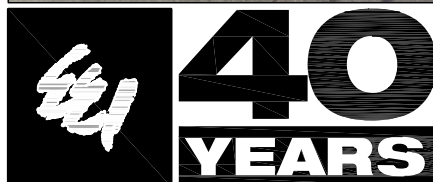
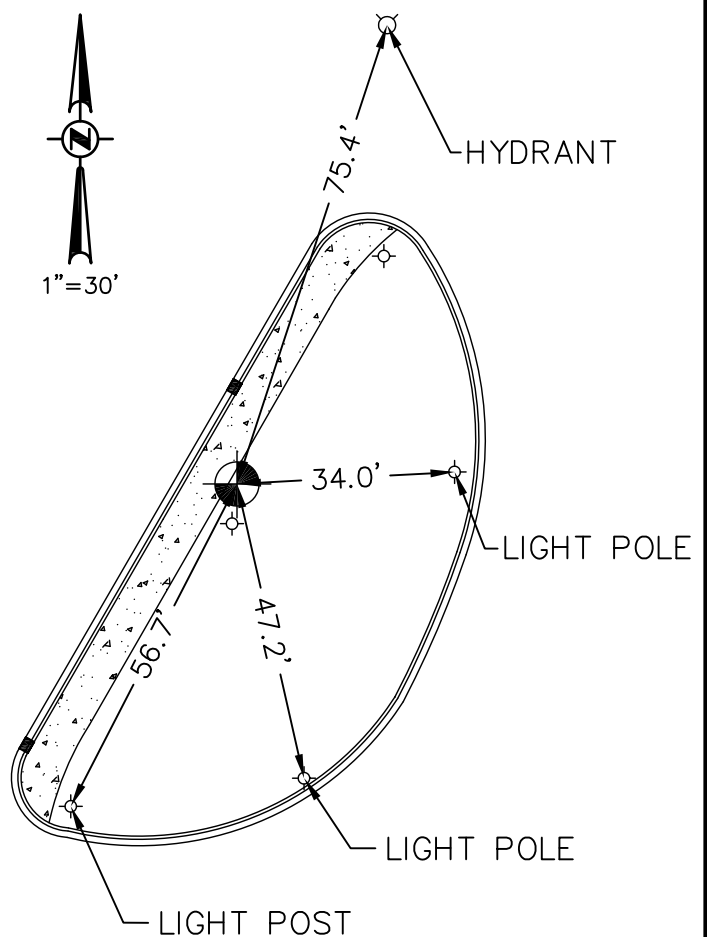
VILLAGE OF MONTGOMERY

SURVEY CONTROL

STATION NAME	9
NORTHING	1844132.417
EASTING	981910.062
ELEVATION (NAVD 88)	632.34

STATION DESCRIPTION: 3" ALUMINUM DISC SET IN CONCRETE AND STAMPED
'VILLAGE OF MONTGOMERY SURVEY CONTROL'

COORDINATES ARE ILLINOIS STATE PLANE, EAST ZONE, NAD83 (2011), GEOID 12A



Engineering Enterprises, Inc.
CONSULTING ENGINEERS
52 Wheeler Road
Sugar Grove, Illinois 60554
630.466.6700 / www.eeiweb.com

MAY 27, 2014

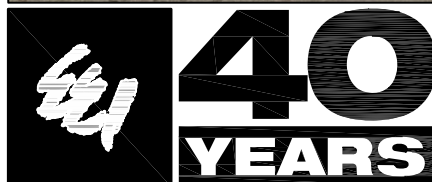
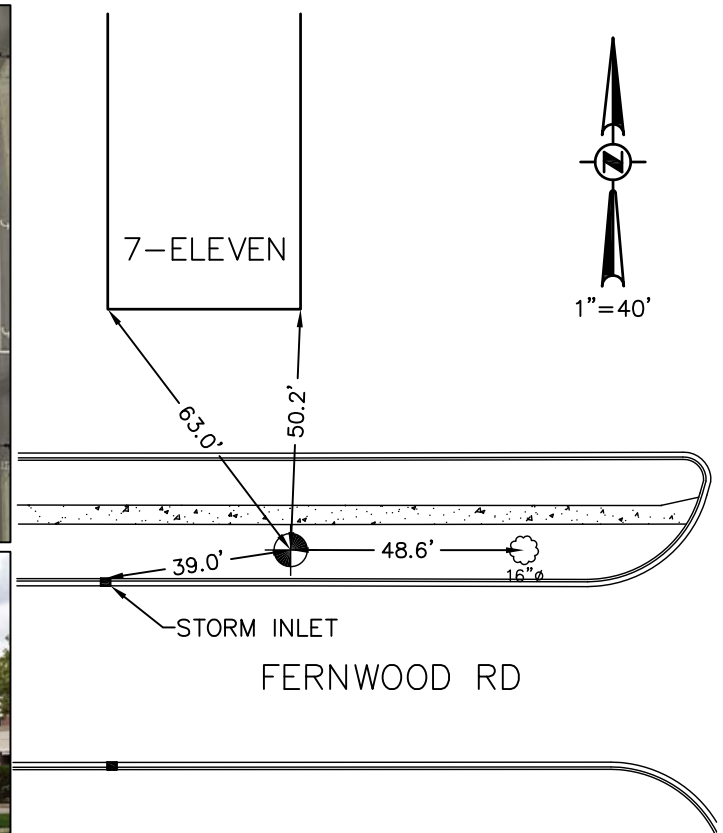
VILLAGE OF MONTGOMERY

SURVEY CONTROL

STATION NAME	10
NORTHING	1839531.744
EASTING	987705.757
ELEVATION (NAVD 88)	667.58

STATION DESCRIPTION: 3" ALUMINUM DISC SET IN CONCRETE AND STAMPED 'VILLAGE OF MONTGOMERY SURVEY CONTROL'

COORDINATES ARE ILLINOIS STATE PLANE, EAST ZONE, NAD83 (2011), GEOID 12A



Engineering Enterprises, Inc.
CONSULTING ENGINEERS
52 Wheeler Road
Sugar Grove, Illinois 60554
630.466.6700 / www.eeiweb.com

MAY 27, 2014

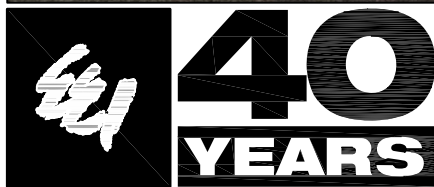
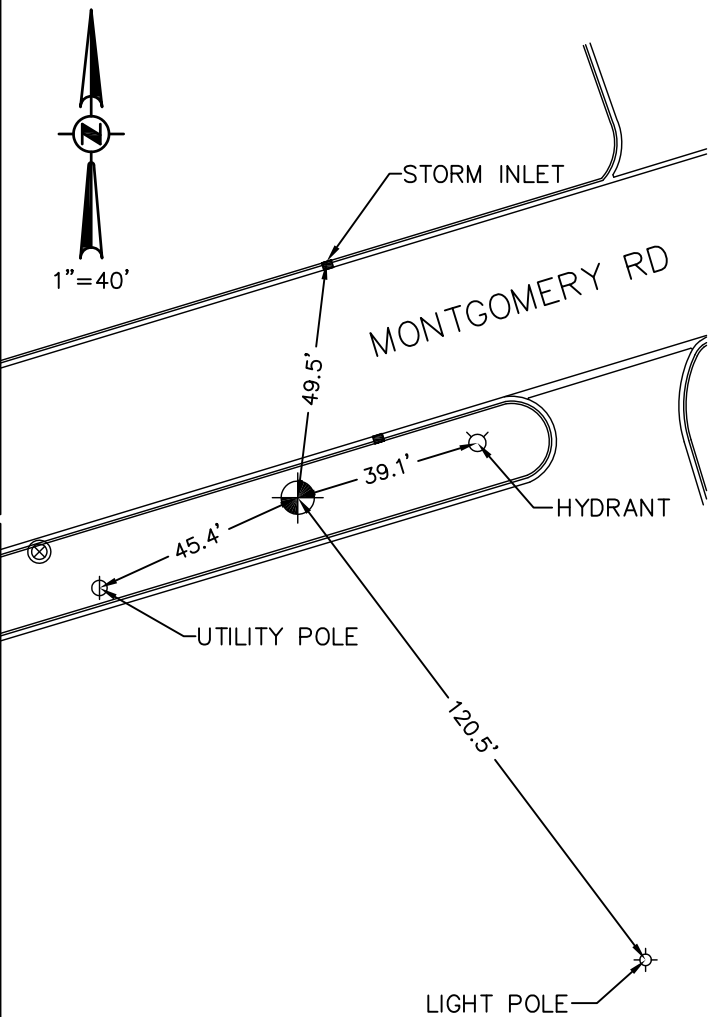
VILLAGE OF MONTGOMERY

SURVEY CONTROL

STATION NAME	11
NORTHING	1843324.342
EASTING	987669.012
ELEVATION (NAVD 88)	672.50

STATION DESCRIPTION: 3" ALUMINUM DISC SET IN CONCRETE AND STAMPED
'VILLAGE OF MONTGOMERY SURVEY CONTROL'

COORDINATES ARE ILLINOIS STATE PLANE, EAST ZONE, NAD83 (2011), GEOID 12A



Engineering Enterprises, Inc.
CONSULTING ENGINEERS
52 Wheeler Road
Sugar Grove, Illinois 60554
630.466.6700 / www.eeiweb.com

MAY 27, 2014

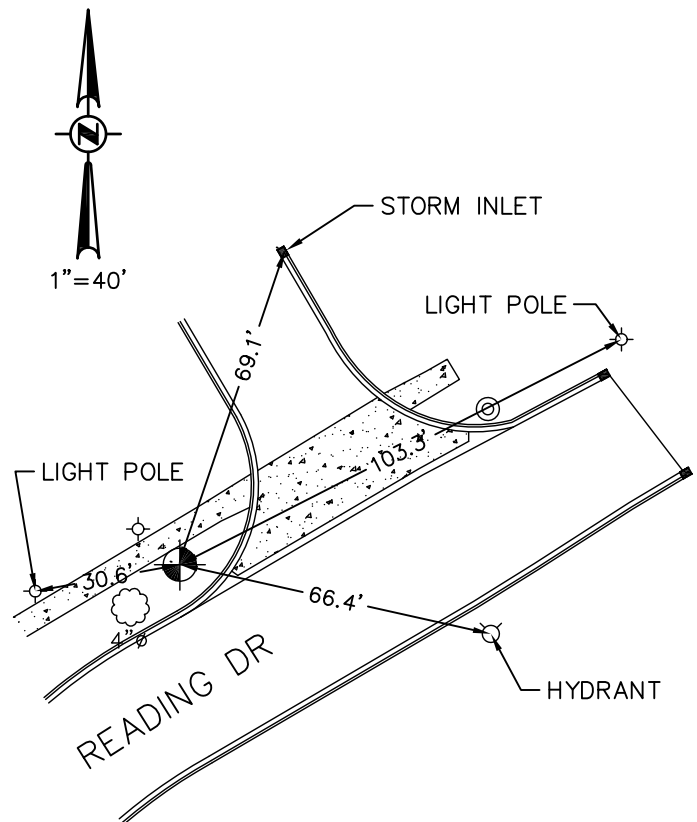
VILLAGE OF MONTGOMERY

SURVEY CONTROL

STATION NAME	12
NORTHING	1840805.197
EASTING	994863.569
ELEVATION (NAVD 88)	672.86

STATION DESCRIPTION: 3" ALUMINUM DISC SET IN CONCRETE AND STAMPED 'VILLAGE OF MONTGOMERY SURVEY CONTROL'

COORDINATES ARE ILLINOIS STATE PLANE, EAST ZONE, NAD83 (2011), GEOID 12A



40
YEARS

Engineering Enterprises, Inc.
CONSULTING ENGINEERS
52 Wheeler Road
Sugar Grove, Illinois 60554
630.466.6700 / www.eeiweb.com

MAY 27, 2014