

Reclamite® Petroleum Maltene-Based Rejuvenating Agent

► What is Reclamite?

According to the National Center for Pavement Preservation “a true asphalt rejuvenator is a maltene-based petroleum product which has the ability to absorb or penetrate into an asphaltic concrete pavement and restore those reactive components (maltenes) that have been lost from the asphalt cement binder due to the natural process of oxidation.”

Reclamite comprises the same maltene fractions as the asphalt binder. Reclamite is refined from a naphthenic (wax free) base that seals and preserves the surface “in-depth”.



Components of Asphalt.



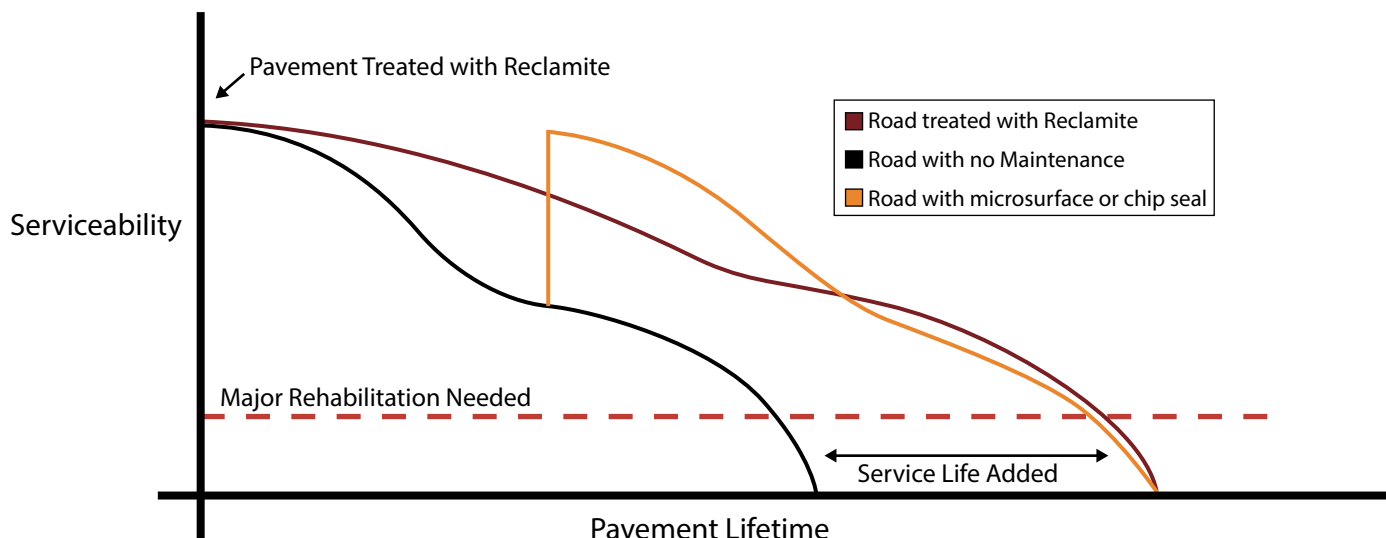
► When should Reclamite be used?

Reclamite is a “top-of-the-curve” application. Apply to newer pavement (less than six years old in northern climates, less than ten years old in southern climates) that shows minimal signs of surface deterioration.

► How does it work?

Reclamite has been used for more than 50 years and is proven to add 5-7 years service life to pavements. It penetrates, rejuvenates and seals the surface by replenishing the lost maltene fraction in the asphalt binder. Maltene is necessary to make the surface durable and flexible. Reclamite fluxes with the asphalt binder, restoring the aggregate/asphalt bond.

Reclamite prevents raveling and stripping and, by densifying the pavement’s surface, it helps address compaction issues, reduces surface permeability, and prevents air and moisture intrusion. It adjusts viscosity and penetration values. It does not contain degreasers, solvents or creosotes.



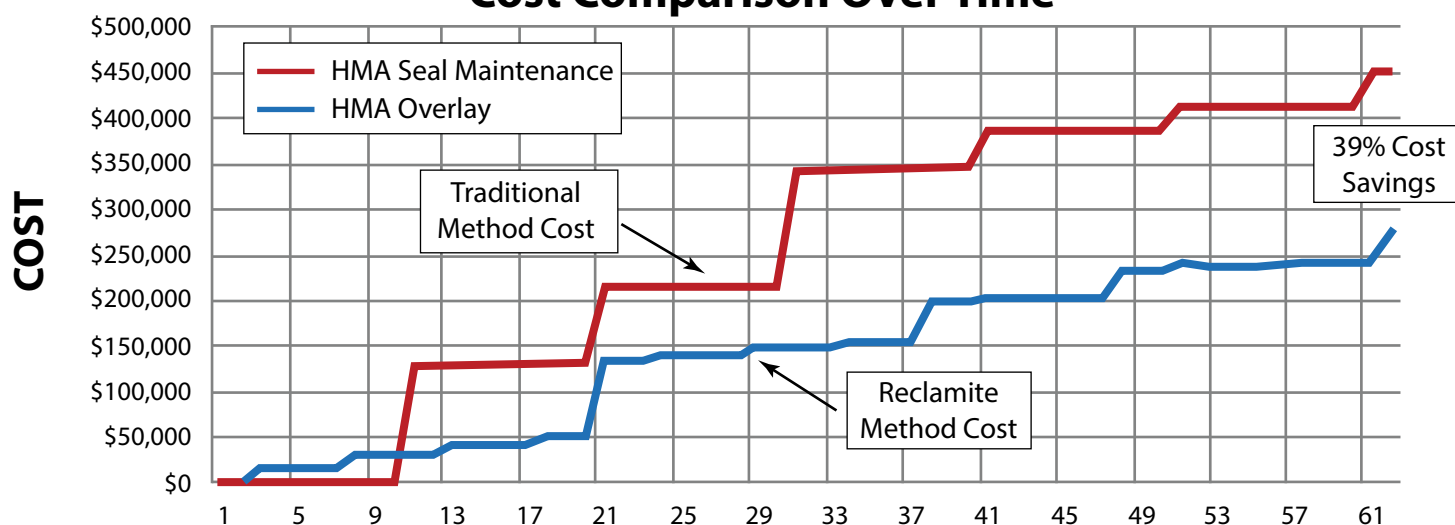
► How is Reclamite applied?

Reclamite is sprayed like a fog seal. The emulsion is diluted with water to 60 percent Reclamite. Application rates average between .05-.08 gallons per square yard. It is applied in one pass, has a 20-45 minute cure time and leaves no surface coating. Then a light coating of sand or limestone screenings is applied (1-2 pounds per square yard). The screenings are swept between 1-2 days after application. Striping is not compromised and remains visible throughout the application process.



Application of Reclamite

Cost Comparison Over Time



Source: Town of Avon, Indiana Preservation Study. Schneider Engineering Case Study
Presented at Purdue University www.youtube.com/watch?v=dYIDAA2Ey4k

AVON PASER AVG. 1999-2013

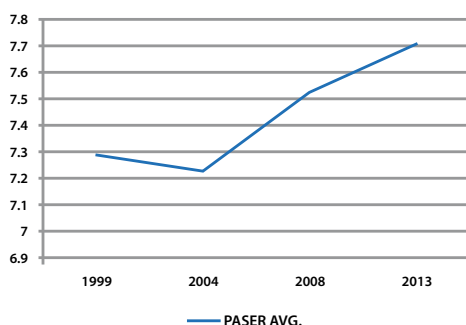


Chart shows average Paser ratings increasing after Reclamite program was initiated

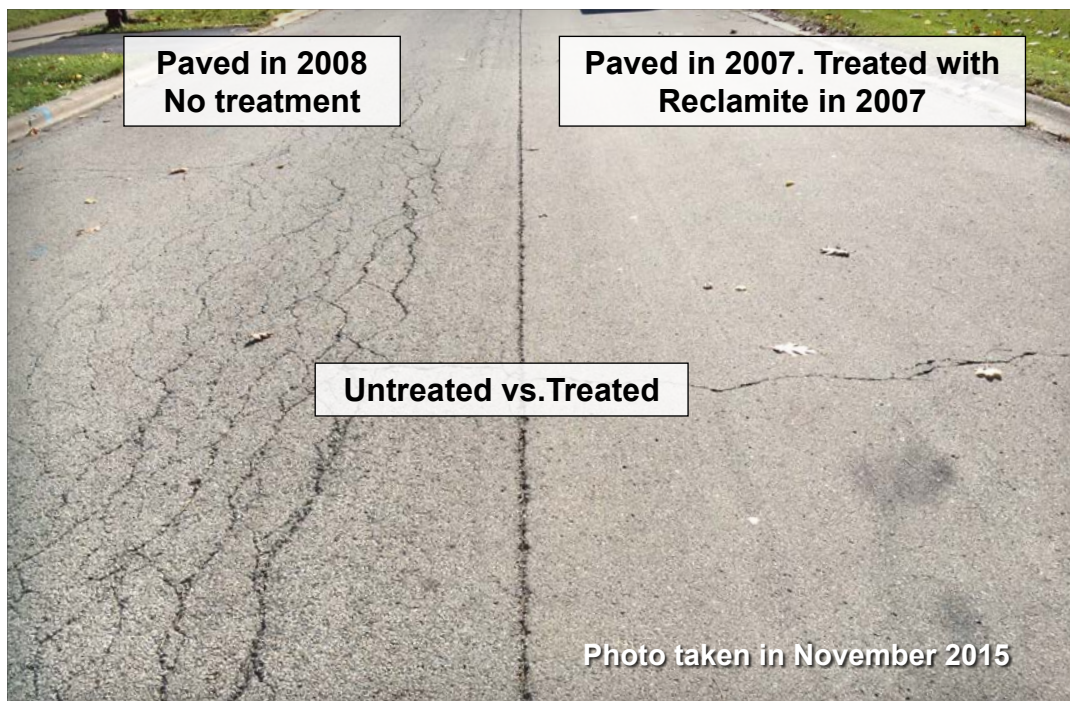


Photo taken in November 2015